

NEWSLETTER NO 1

# Richard Pedlar Architects

---

*“You have delivered a project that has given us something far beyond what we had imagined was possible and has changed the way in which we live”*

*Mrs H. Bristol*

---

Welcome to our newsletter. It has been a busy and successful year at Richard Pedlar Architects. We moved office to new premises on Great George Street and received awards recognising the quality of our work in both commercial and residential sectors.

## Office Move

We are now fully settled into our new office at St. Brandon's House on Great George Street. This is a beautiful Grade II listed building just off Park Street. We are enjoying its central location in the heart of Bristol with magnificent views onto Brandon Hill.



---

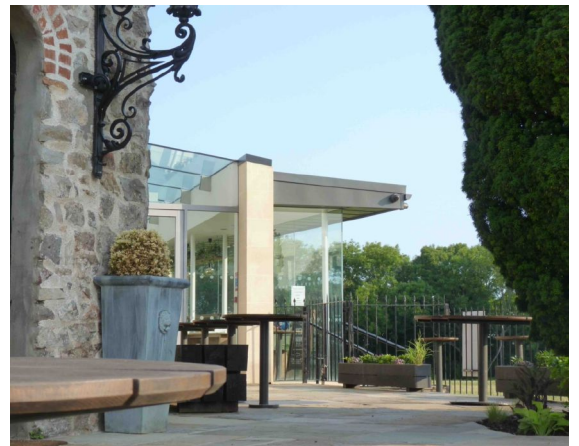
*“The award panel considered this project to be a significant contribution to conserving an iconic building in such a historically important location and providing an excellent example of bringing an old building back into beneficial public use. The new additions to the building are sympathetic to the more prominent old building and add to its visual attractiveness and its utility. The project has not only restored a building of historical richness but also provides a unique space where Bristolians and tourists can enjoy the Cave, Camera and incredible views.”*

*Bristol Civic Trust*

---

## Bristol Civic Society Design Award: Clifton Observatory

We were delighted to present our scheme for the Clifton Observatory to Bristol Civic Trust, outlining our design involvement in the extension and alteration works to this iconic building on Durdham Downs. In accepting the award, Simon and Ali explained how the site had developed over hundreds of years from a windmill in the C18th, to an astronomical observatory, to its present use as a café, event space, museum and camera obscura.



The scheme responded to a complicated design brief to provide a building that works as a café, event space and museum all at the same time. Difficult challenges were overcome to create a contemporary café extension with a light touch to the Grade II\* building while providing good circulation routes and servicing. Please take the opportunity to visit the new café, rooftop terrace and museum to experience this fantastic Bristol attraction!



## Winner of LABC Best Residential Extension: South-West Region

Working with a private client, Richard Pedlar Architects received the above accolade along with the contractors, Ken Biggs Ltd. for undertaking this extensive new-build and refurbishment project to a Grade II Listed house and outbuildings in Somerset. The project involved the construction of a new swimming pool, changing facilities and a sauna adjacent to a renovated Victorian greenhouse. Other works included the conversion of outbuildings into guest accommodation, a snooker room and a gym.



The LABC Award recognises the quality of the design, detailing and construction of the project.



## Ongoing Projects

We continue to work on a wide variety of projects ranging from residential extensions, restaurants, new-build houses and works to Listed Buildings.

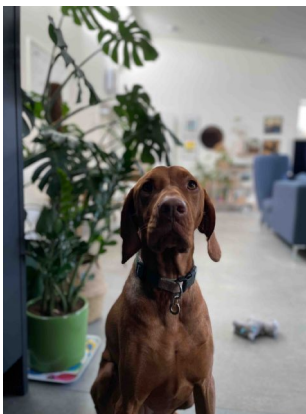
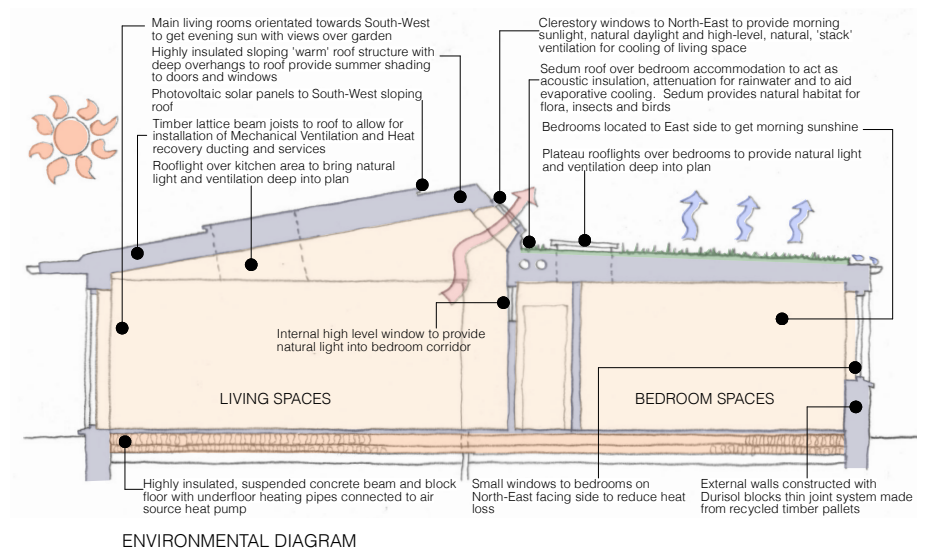
Below are some examples of other recently completed projects.

### New House in Westbury Park

Planning approval was obtained for construction on a tight infill plot for a sustainable, low-energy, new-build family house. The house has no gas supply to it and uses solar photovoltaic panels, battery storage and an air-source heat pump to provide most of its energy demands in terms of heating and power. The massing of the house is kept low to fit comfortably into the enclosed space. The section drawing below details the environmental design considerations.

*“It’s a remarkable feeling coming back to a home that we miss every time we are away from it. Thank you again for designing something that has improved our lives in every way. And that is not an understatement!”*

*Mr. C. Bristol*



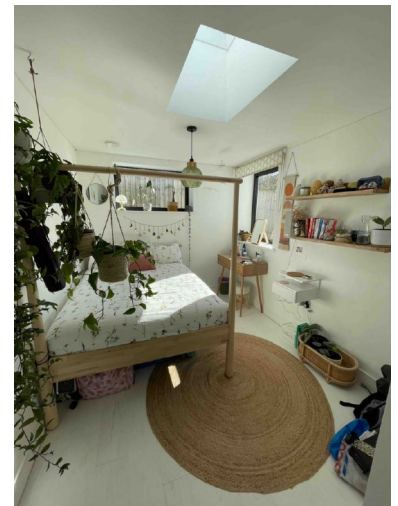
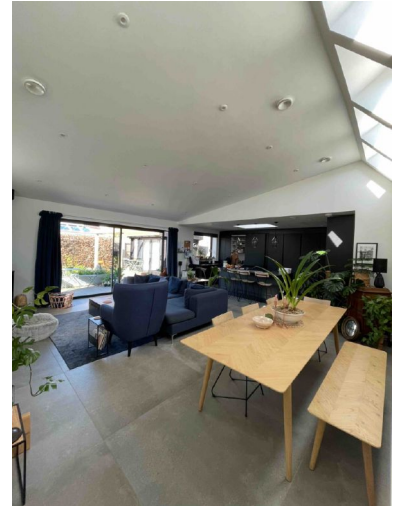
*Ripley loves their new home!*

The clients now benefit from owning a low energy, high comfort house that was designed to meet their particular lifestyle.

*The open plan living spaces are flooded with natural light and link directly to the West facing garden and terrace. The kitchen was undertaken by The Kitchen Partners and was nominated for Leicht's Global Design Award 2022. MVHR plant is located in the service space above the kitchen ceiling that extracts heat from stale exhaust ventilation air and transfers it to the fresh, incoming air supply.*

*Bedrooms and bathrooms are located to the East, lit by both casement windows and roof lights with integral black-out blinds. The rooflights allow direct sunlight into the room to add visual interest throughout the day. A sedum roof over, provides enhanced sound insulation, an external eco-system and a means of attenuating rainwater run off by absorption and evaporation.*

*The garage contains battery storage for the electricity generated by the extensive solar PV array. It has an electrical car charging point and a car turntable.*



## Loungers Units

We are pleased to be providing ongoing services over a number of years for Loungers (UK) Ltd. comprising the Loungers, Cosy Club and Brightside restaurant brands. We have worked with Loungers since 2006 in connection with the majority of their now 220 plus sites around the country.



Copyright Loungers UK Ltd

## Contact Details

We would be delighted to discuss any potential projects with you. Please call us to arrange an initial, free consultation with Simon Fitzgibbon or one of our team.

Richard Pedlar Architects Brandon House 29 Great George Street Bristol BS1 5QT  
0117 9742612 [www.rpca.co.uk](http://www.rpca.co.uk) [simon@rpca.co.uk](mailto:simon@rpca.co.uk)